



TUSKS & TRAILS
Destination Management • Zambia

Founded by safari specialists with deep roots in Zambia and our office based in Livingstone, 5 km's from the iconic Victoria Falls, Tusks and Trails is a boutique destination management company creating tailor-made journeys across Zambia and Southern Africa. Combining expert local knowledge, seamless logistics, and authentic experiences, we help travel advisors craft unforgettable safaris that connect guests with the wild beauty, wildlife, and culture of Africa.

Post Forum FAM Trip

Livingstone / Lower Zambezi

3 Spaces Available

What's included : Meals, activities, transfers, flights, park fees

What's not included : guide and staff tips, spending money for gift shops, international flights.

Dates : 28 September 2026 to 3 October 2026.

Beginning in Livingstone, End in Lusaka

Basic Itinerary

Meet at AVANI hotel reception

28th September (Livingstone)

Night @ Royal Livingstone

29th September (Livingstone)

Site inspection of Mukwa Lodge

Night @ Tanyati

30th September (Lower Zambezi)

Fly Livingstone, via Lusaka, to Lower Zambezi

Night at Lolebezi

1st October (Lower Zambezi)

Night @ Anabezi Lodge

2nd October (Lower Zambezi)

Night @ Anabezi Lodge

3rd October

Fly Lower Zambezi to Lusaka

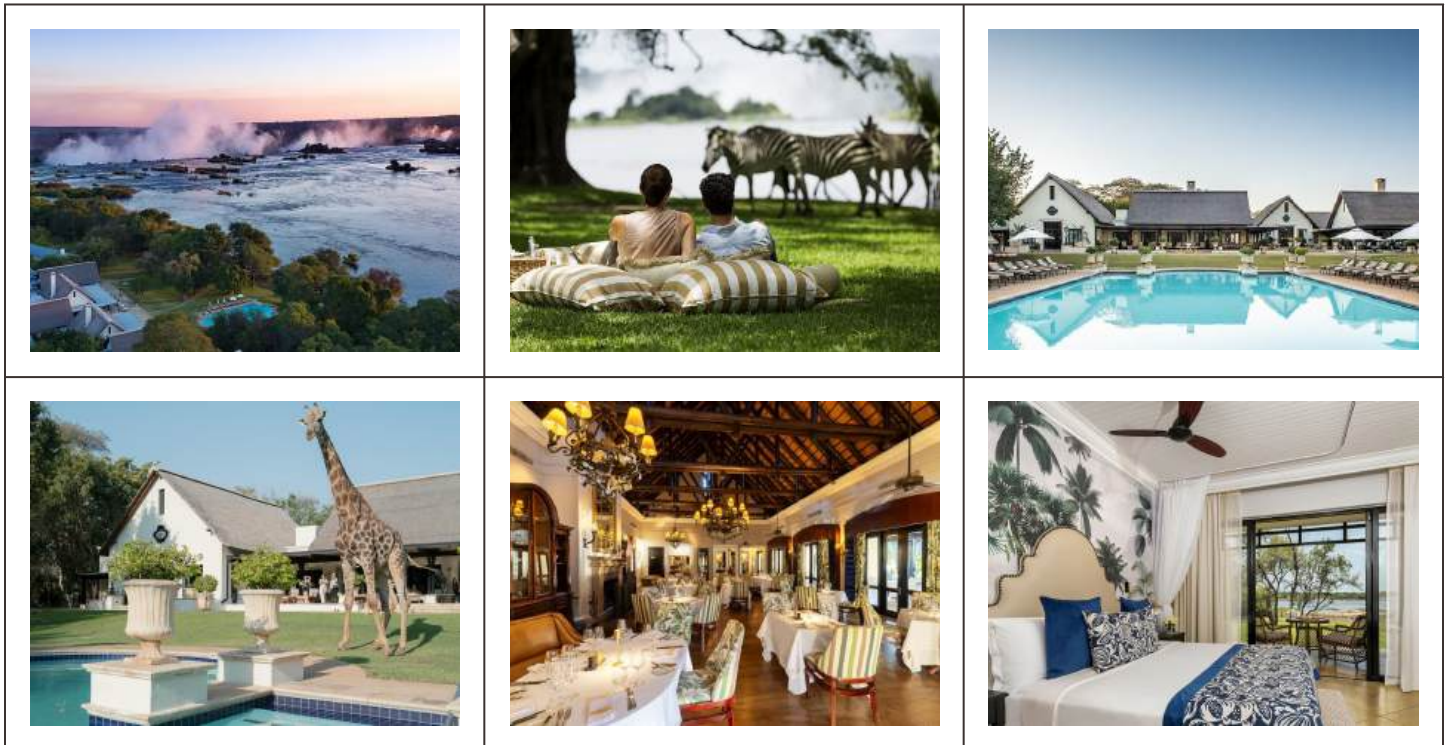
End in Lusaka International Airport

FAM END

Information on properties

The Royal Livingstone

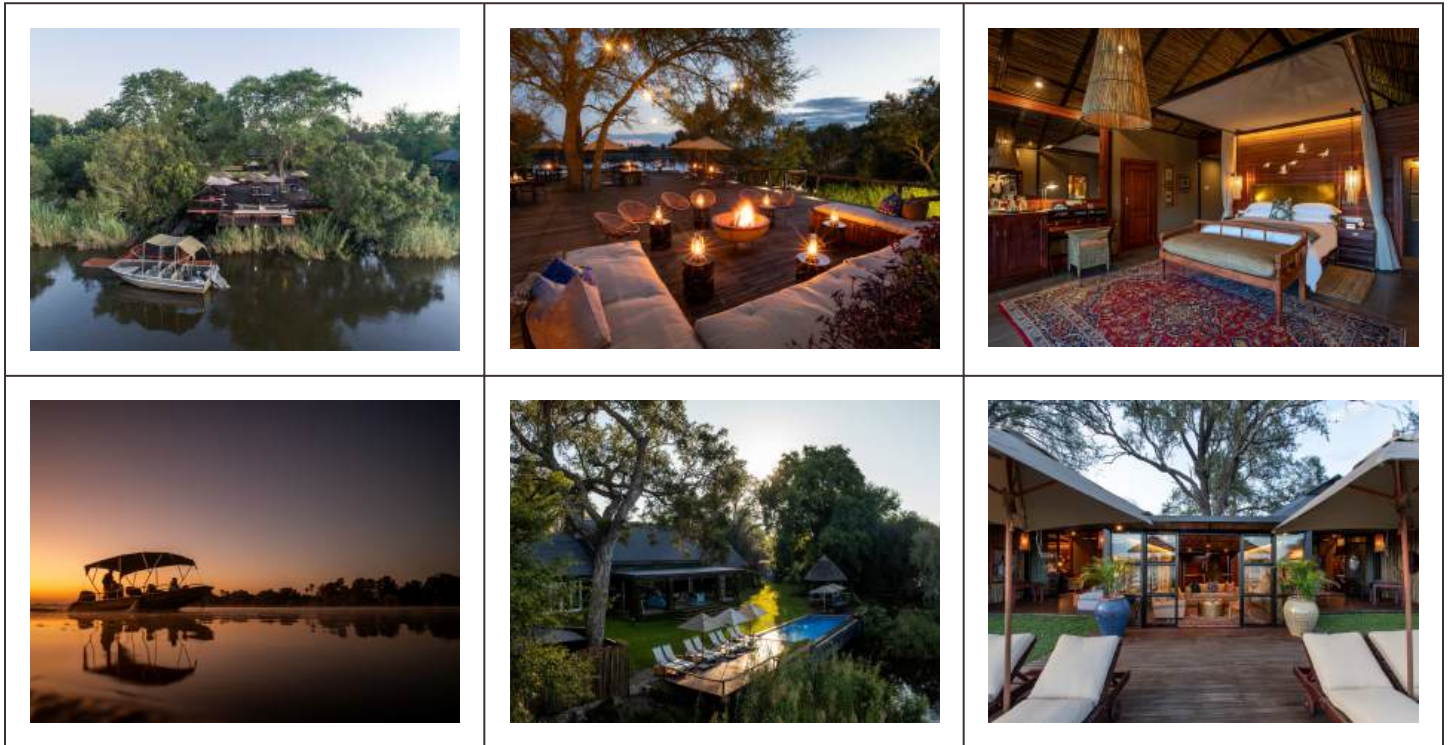
Perched on the banks of the Zambezi River and just steps from Victoria Falls, the Royal Livingstone Hotel is one of Zambia's most iconic luxury properties. Blending classic colonial elegance with a spectacular natural setting, the hotel offers beautifully appointed rooms, riverfront dining, a world-class spa, and exclusive access to the Falls. Guests can enjoy unforgettable experiences such as sunset cruises, Livingstone Island visits, and watching zebra and giraffe roam freely across the hotel's lush grounds



Mukwa Lodge/Tanyati

Mukwa River Lodge is a boutique luxury property set just outside Livingstone on the banks of the Zambezi River. It offers an elegant yet relaxed safari-style stay with beautifully appointed river-facing suites, lush gardens, and easy access to Victoria Falls and surrounding adventure activities. The lodge is known for its peaceful setting, sunset river views, and convenient location for combining relaxation with high-energy experiences like rafting and helicopter flights.

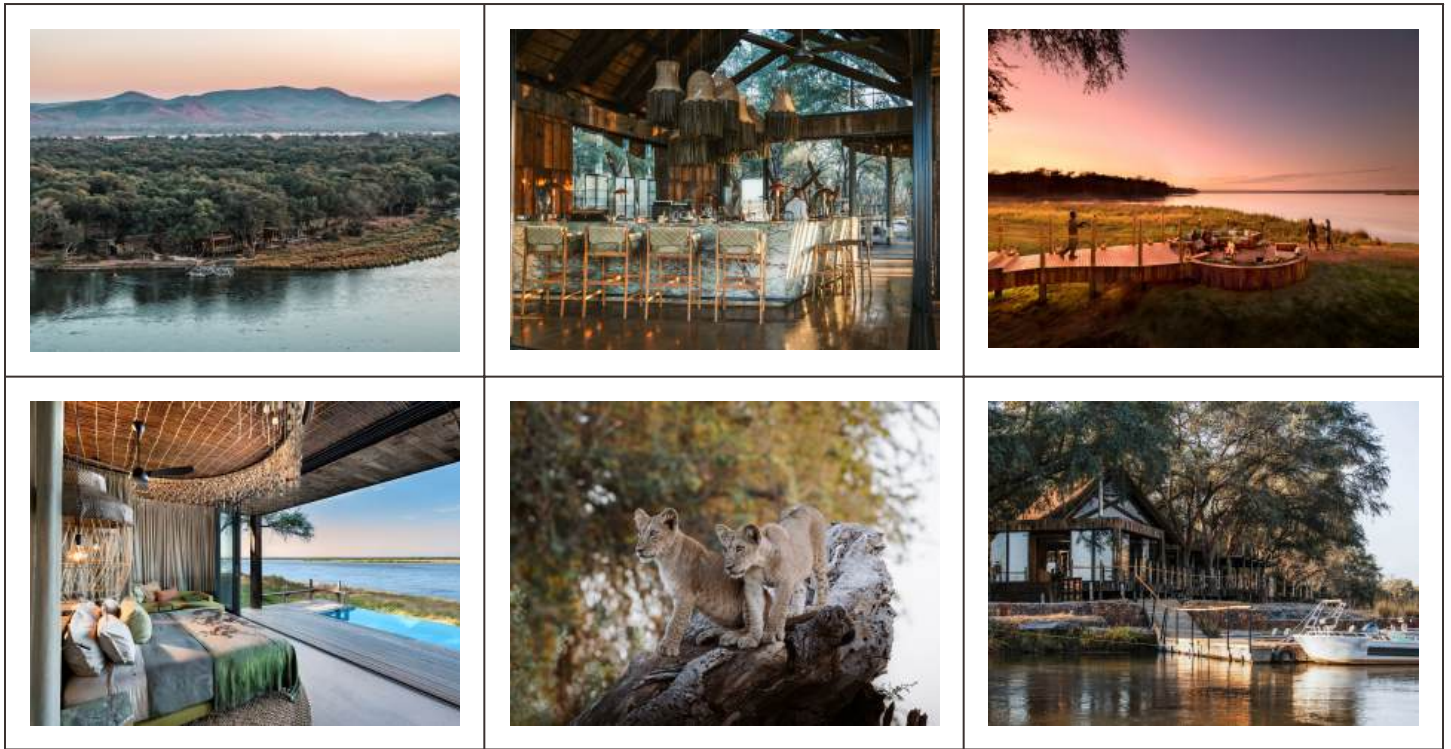
Their sister property, and newest addition, Tanyati, is a home style lodge which sleeps up to 10. It is also located along the Zambezi River offering a great experience for families or larger groups.



Lolebezi

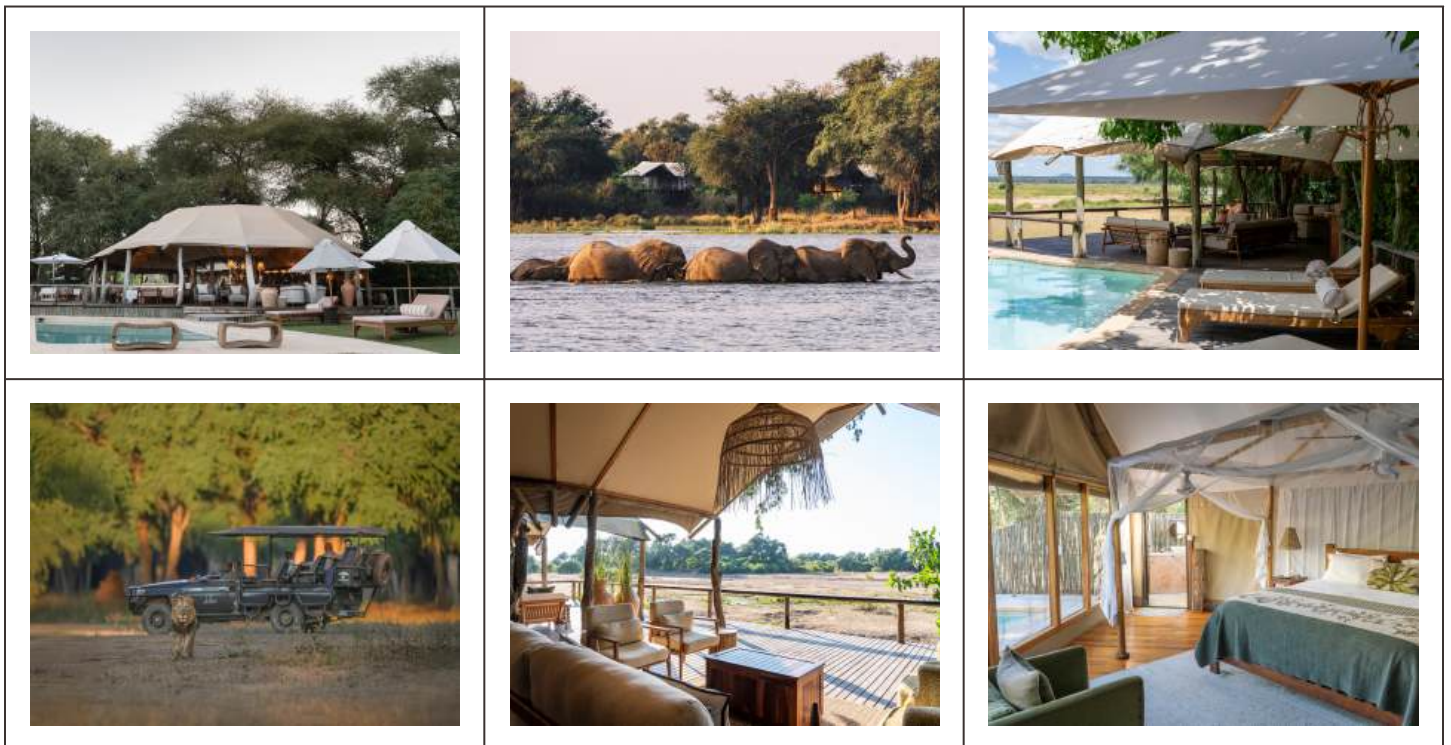
Lolebezi is an ultra-luxury safari lodge located on a private stretch of the Zambezi River within the Lower Zambezi National Park, Zambia. Designed with a contemporary, architectural style that blends seamlessly into its natural surroundings, the lodge offers a high-end, design-led safari experience focused on exclusivity, wellness, and exceptional guiding.

The lodge features 8 expansive suites, each with a private plunge pool, indoor and outdoor living spaces, and uninterrupted river views, making it one of the most intimate and exclusive stays in the Lower Zambezi.



Anabezi

Anabezi Lodge is a luxury tented safari camp set on the banks of the Zambezi River in the heart of the Lower Zambezi National Park. Surrounded by winterthorn forests and wildlife-rich floodplains, the lodge combines contemporary comfort with exceptional game viewing and river-based safari experiences. The property features 12 spacious tented suites, including a family suite, each with private plunge pools, indoor and outdoor bathrooms, and panoramic views over the river and floodplain.



Information on airline

Proflight

Proflight Zambia provides convenient and reliable air access to Zambia's top tourism destinations, making it easy to combine the country's diverse experiences. From the mighty Victoria Falls to the remote wilderness of South Luangwa and Lower Zambezi, Proflight's extensive network helps travellers maximise their time and travel comfortably between destinations.

Information on FAM host

Cath Bradshaw : Co Founder, Tusks & Trails

Born and raised in Zambia, Cath grew up immersed in the tourism industry before gaining international experience in luxury travel and sales in London. Following roles at Audley Travel selling Southern Africa, she returned to Zambia to launch Tusks and Trails alongside her husband and business partner, Dan. Today, she specialises in destination marketing, tourism development, and showcasing Zambia's unique safari and adventure experiences to global audiences.

Her favourite thing on safari is watching a wild dog hunt or adding a splash of Amarula to her coffee while on a morning game drive!



Booking Information

Total : \$ 1 410 per person

***Please email Cath at cath@tusksandtrails.com to book your space and confirm payment details.
Further itinerary and details to follow after confirming spot on FAM.***